

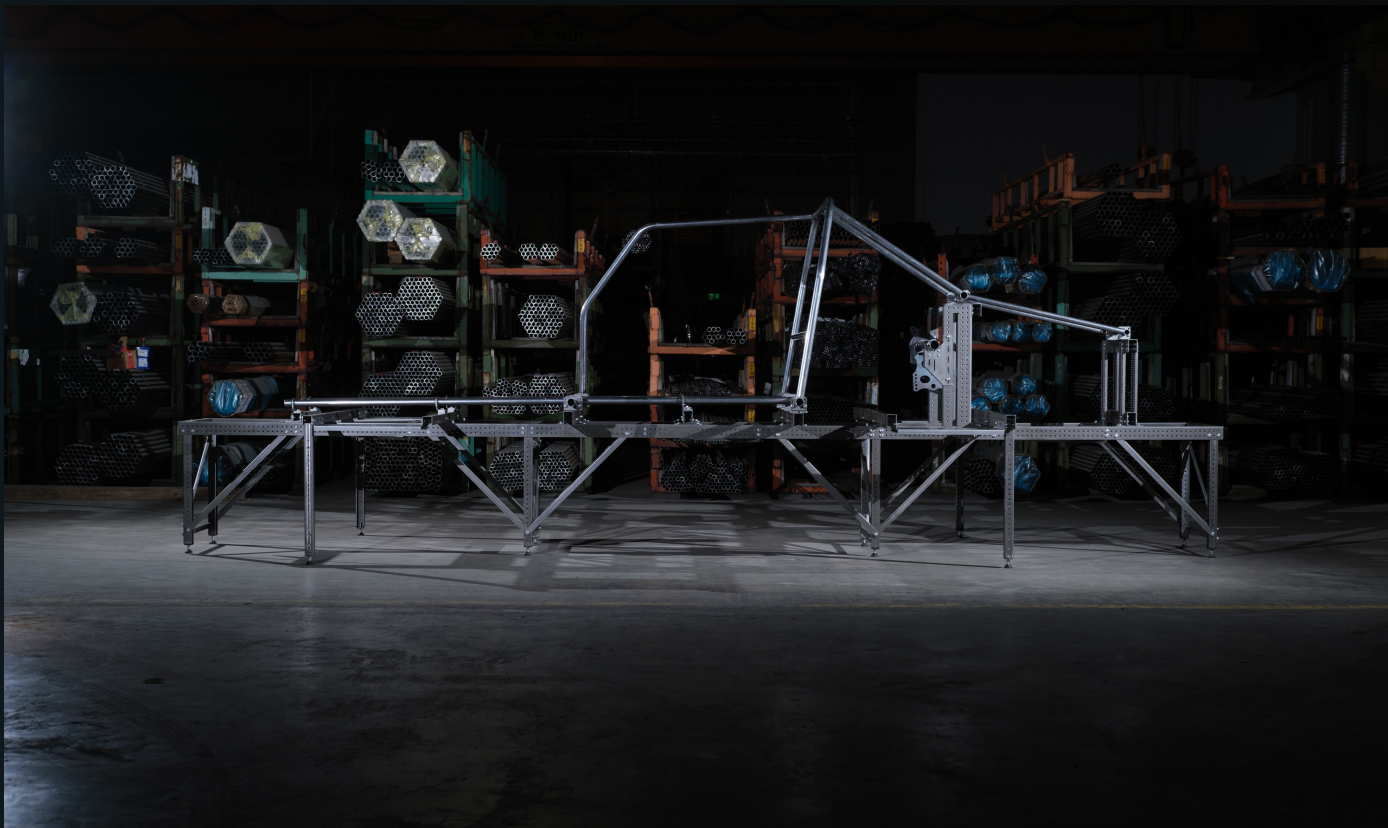


Multi-jig

Simplicity, Universality.



The **Multi-Jig** system offers unparalleled versatility and adjustability for all your chassis building needs.



Side view of our Doorslammer Multi-Jig kit.

Multi-Jig is the first chassis jig made to accompany your individual building needs. Its modular design enables you to assemble a rigid and accurate jig to fit any type of building project, be it dragsters, doorslammer, hot rods, motorcycles, or for more industrial projects.



1850 base module with 700 legs.

Multi-Jig comes in three base modules 1850*, 1250*, 650mm* long, and 650mm wide. It's these modules that function as the bases of our ready-to-assemble kits.

*≈72.875 in, *≈49.25 in, *≈25.5 in

The Stock Car kit features one 1850 and two 1250 modules assembled into one 4350mm long jig, 700mm legs, crossbeams and support legs with fixture plates for resting your wheels on, a wire tensioner for an accurate chassis base middle point, and more.



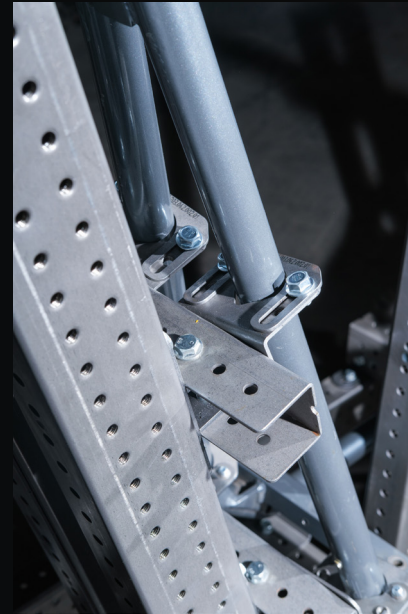
Front view of our assembled Doorslammer Multi-Jig kit.

There are three types of legs available, 700*, 400*, and 120*mm tall with an option to add a 50-200*mm adjustable extension.

Along with the legs come standard rubber feet, with options to upgrade to adjustable rolling feet.



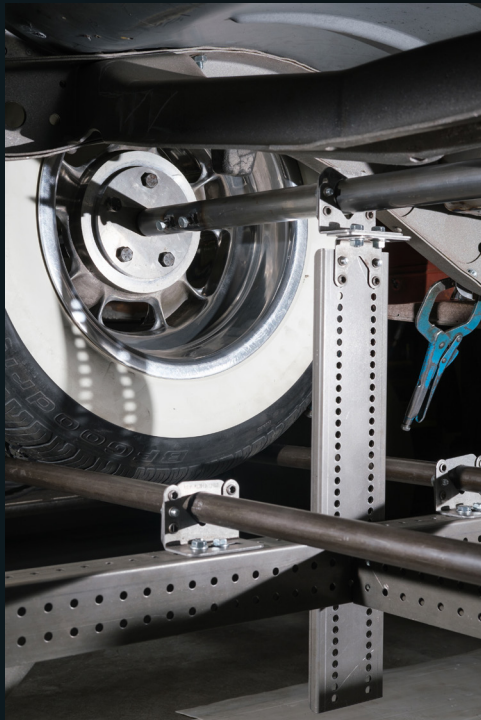
Hot rod on our hot rod kit with 400mm legs and optional adjustable rolling wheels



Close up of our tube fasteners and small 50mm tall beam, on steering upright.

Examples of assorted parts available for the **Multi-jig** are:

- Tube fasteners for fitting of various dimensions of tubes.
- The rear-end jig enables you to determine the exact height of the rear end of your project while also enabling you to adjust for 4-link, suspension, and more.
- The wheel spindle jig lets you set the height of the front wheel, and can be used in conjunction with the front strut jig.
- The front strut jig holds the shock absorbers, automatically putting them in a 10-degree camber and caster that zeroes the spindle. The front strut jig also enables you to put the wheel on the spindle and turn it, this makes it easy to place the wheel in relation to the body of your project.



The **Multi-Jig** beams are made of Docol 800 high-strength steel and have a maximum load weight of 2200lbs per module. Load capacity can be increased by attaching additional modules and support legs.

*≈ 27.5 in, *≈15.75 in, *≈4.75 in. *≈2 to 8 in.

View of our rear end jig with 4-link plate for the doorslammer kits.



Crossbar being fastened.



Assembled welding table.

The Hot Rod kit features two 1850 modules assembled into one 3700mm long jig, 400mm legs, crossbeams, and support legs with fixture plates for placing the wheels, a wire tensioner for an accurate chassis middle point, and more.



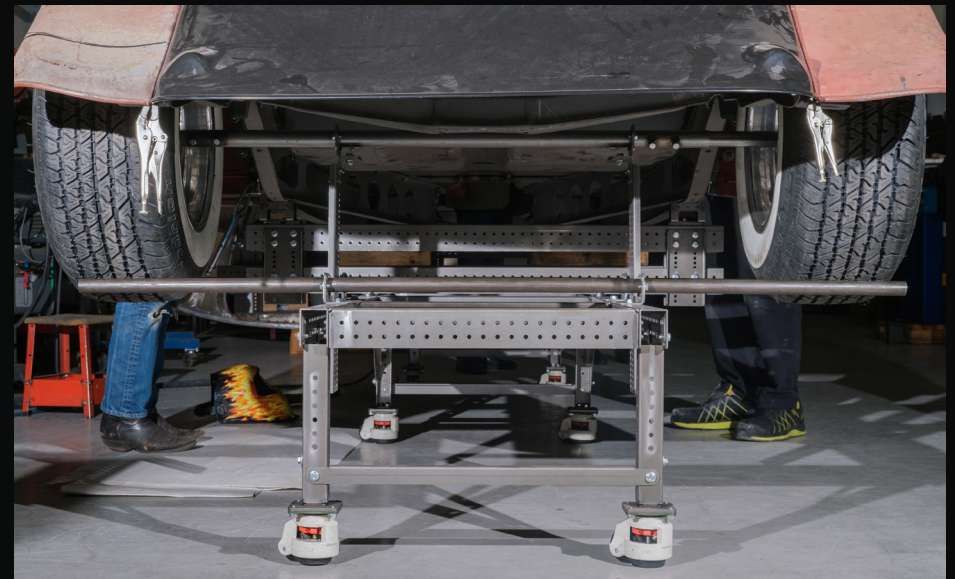
Our optional plate wheel for accurate adjustment of side fenders.



Detail of the welding table top with tapped M8 holes.

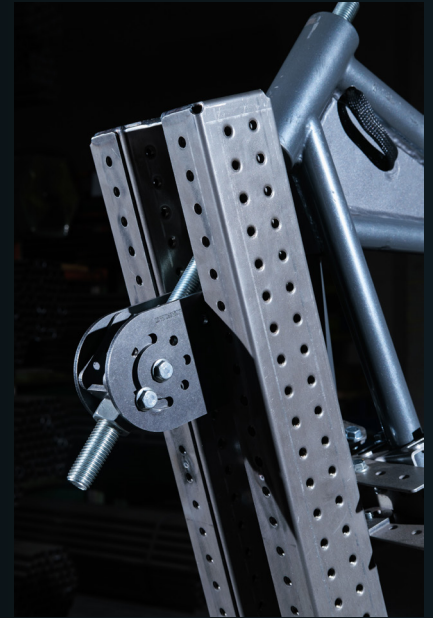
Multi-jig is available as a welding table kit in the size of one 1850, 1250, or 650 module, extendable 700mm legs that extends +50-200mm, a 5mm thick table plate with holes placed 50x50mm from each other, and more.

The table top is available with untapped 8mm holes, tapped M8 holes, or without holes.

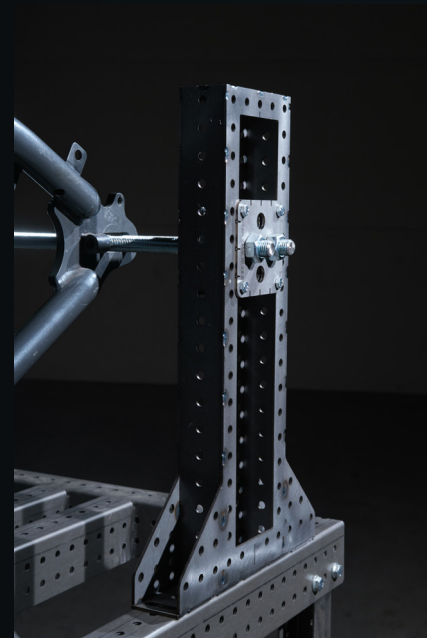


Rear view of our hot rod jig with 400mm legs and adjustable rolling wheels.

The motorcycle **Multi-jig** kit features one 1850 module and 700mm legs with an "upright" for placement of engine fasteners, a steering head support to easily simulate the angle of a steering head, a rear axle support for determining the height of the rear axle on the motorcycle, and more.



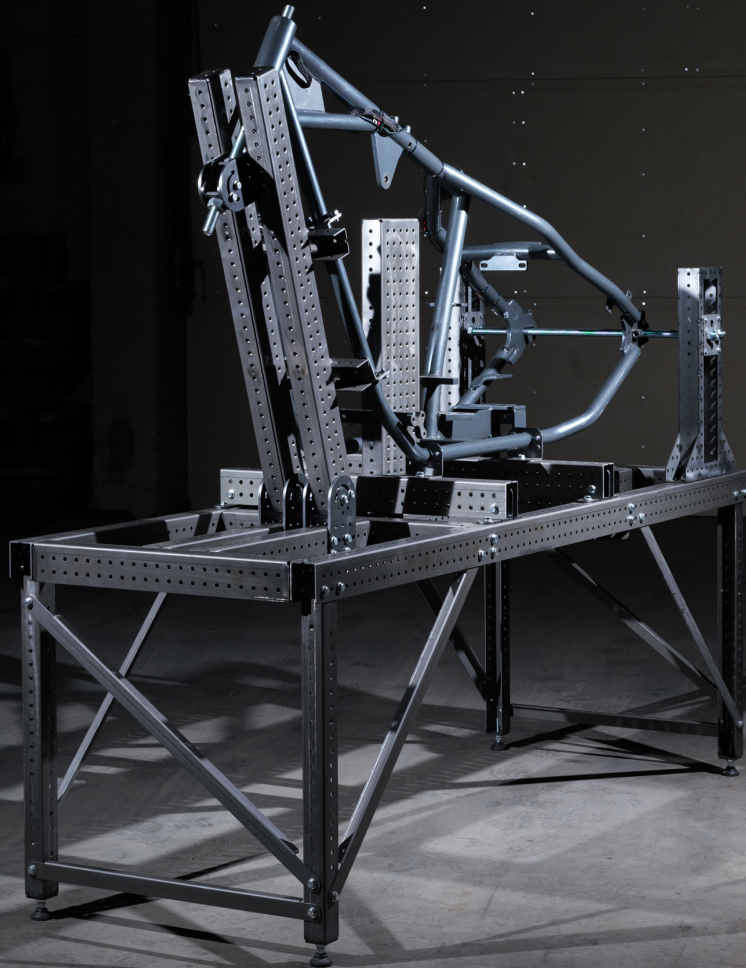
The steering head support for adjustment of the steering head angle.



The axle jig is used to easily determine the height of the rear axle on the motorcycle



The "upright" for easy placement of engine fasteners.



Multi-Jig is designed and manufactured in Sweden by ME Racing Service



ME Racing Service is a family owned business specializing in chassis building, and is an official distributor of Docol R8 tubing, and creator of **Multi-jig**

Puncta LLC is a Chicago based company founded by Ludvig Perés and is the official US distributor of **Multi-jig**.



meracing.com

Email: mail@meracing.com
Social media: @multi_jig
Phone number: +46 (0)243 100 66

Puncta
punctallc.com

Email: ludvig@punctallc.com
Social media: @punctallc
Phone number: 312 965-1632