

Docol Tube R8 compared to CM 4130 N in the heat-affected zone.

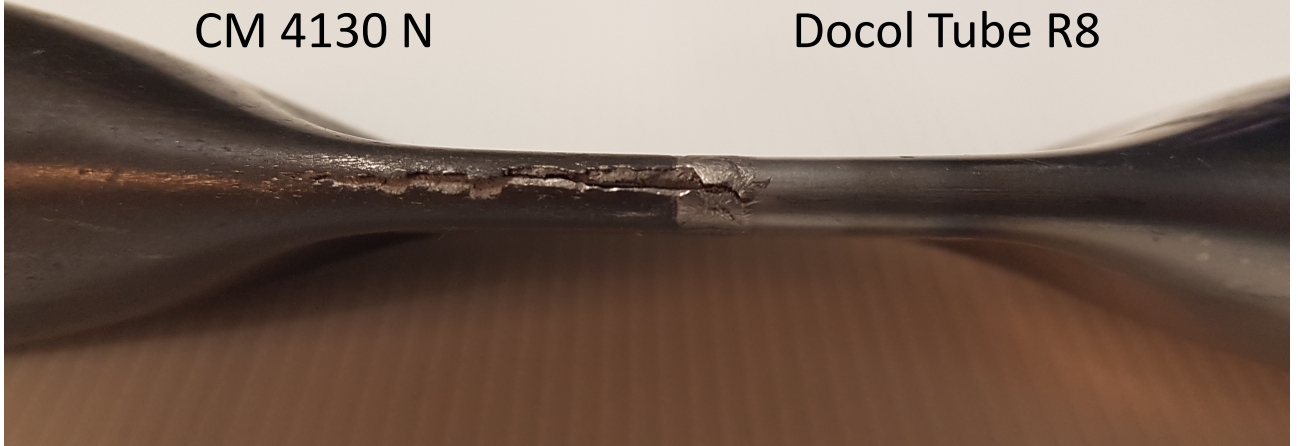
This is an extreme test, but it shows good what happens to the heat-affected zone.



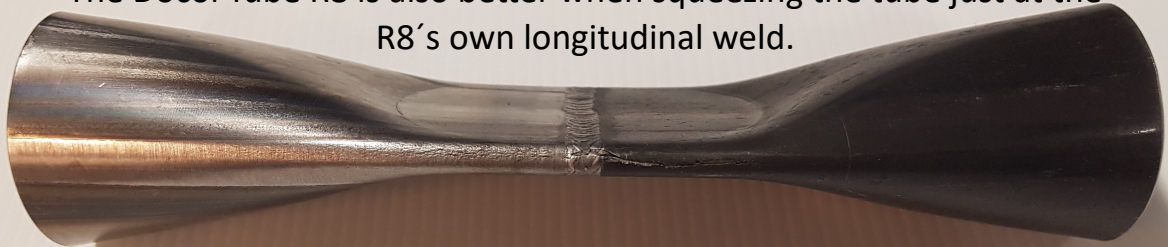
CM 4130 N becomes brittle and breaks easier at the heat-affected zone.

CM 4130 N

Docol Tube R8



The Docol Tube R8 is also better when squeezing the tube just at the R8's own longitudinal weld.



Docol Tube R8

CM 4130 N

The longitudinal weld of the Docol Tube R8

